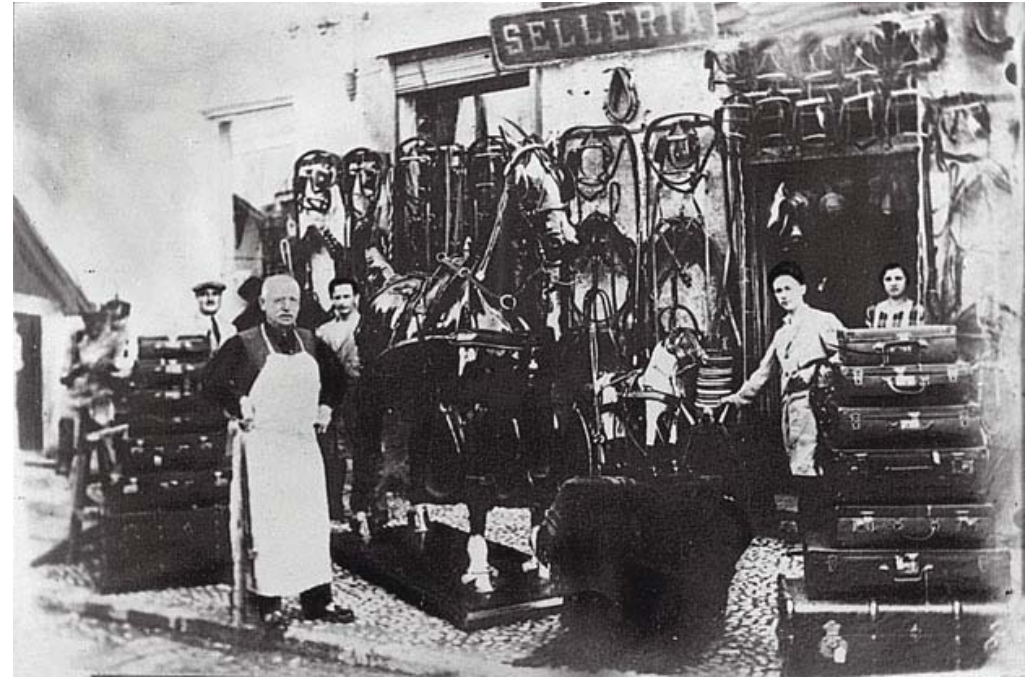


1880
matteograssi®

HISTORY



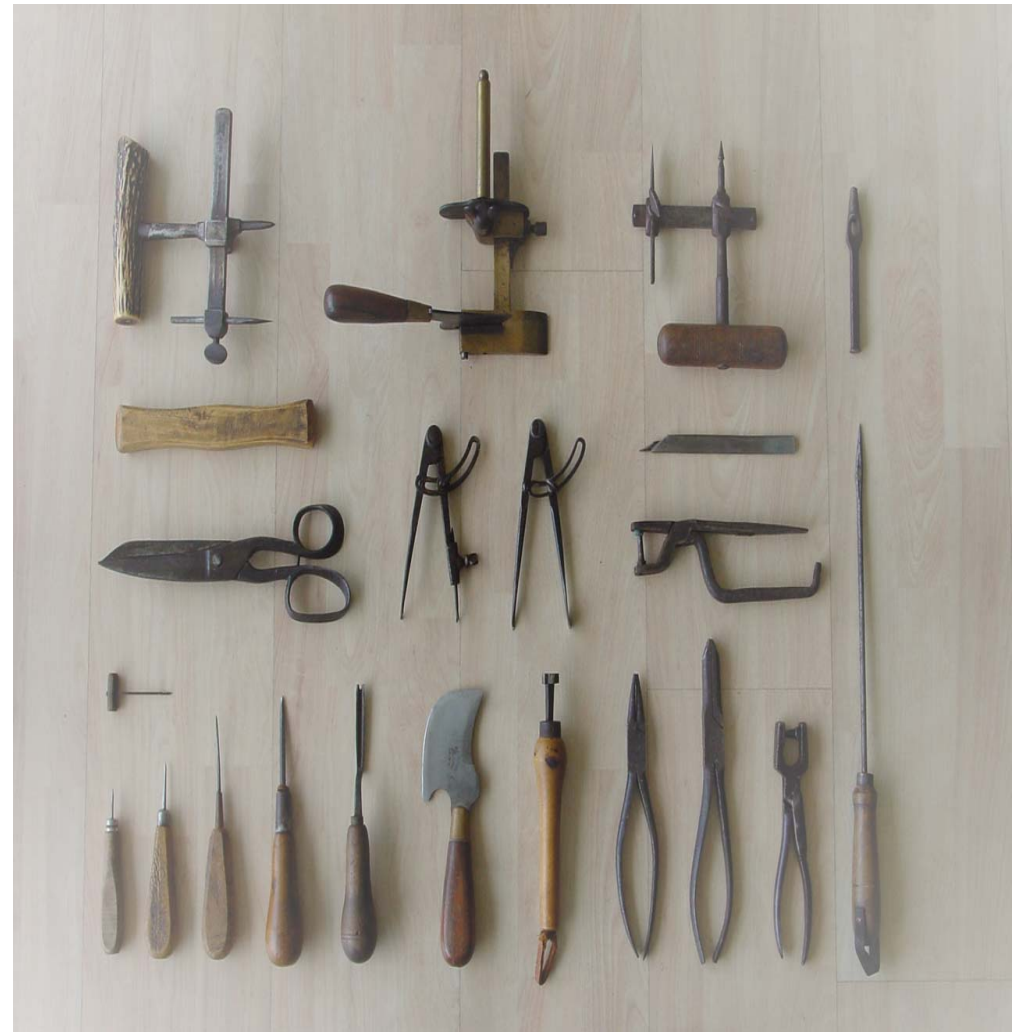
Matteo Grassi with his son Attilio, 1927

The history of Matteograssi began in Mariano Comense, a small town located in a small area called Brianza, situated in Lombardy, a region of northern Italy, where the head of what was to become a dynasty of leather craftsmen opened a workshop in 1880. The sign over the entrance read "Saddlery". Inside, the Grassi family – Matteo and his wife, and later on, his sons – would carefully craft articles made of coach hide, such as saddles, bridles, reins and the full harness, which horses need to work and transport. At the time, the Brianza district was mostly a farming area, and the Grassi family business adapted to the needs of an agricultural economy in which the ability of the craftsman, and his skills in coming up with solutions, were the key to success.



At the end of the Second World War, the family business took on a different character. Brianza started to become one of the liveliest industrial furniture areas in Italy, and the Grassi family paid close attention to the changes that were occurring. From the 1950s to the '70s, thanks to their lengthy experience crafting the saddlery, the family began producing coach hide components for others companies and their many customers included almost all of the most celebrated names in furnishings.

As this work was performed, contact was made on daily base with designers and architects who would follow the various steps in the production process. Thus, the family developed a passion for design, along with a special talent and style, which ultimately led to the decision to found the Matteograssi company in 1978 and create its own line of furnishings.



The first item bearing the company's name was the Korium armchair by Tito Agnoli, an immediate success that brought the creativity of this small, dynamic firm under the spotlight. Since then, -Matteograssi has enjoyed uninterrupted success and growth. After more than hundred years in business, its name is now found at international airports such as Dubai, Kiev, Rome, Paris, Athens, Beijing and Djakarta, amidst millions of people travelling daily. Although the old Saddlery seems to have little in common with a company that is known the world over, there is a strong bond between the two. That bond is coach hide itself... and much more. The 19th century farms in Brianza and today's futuristic airports in steel and glass are the production skills of craftsmen who intelligently linked by follow changes in taste and in the economy adapting their knowledge and experience to the needs of the present.

MATERIALS



The quality of Matteograssi leather results from a careful selection of materials and a rigorous production process. It is produced from the hides of livestock raised only on European farms that provide the proper conditions for maintaining the skin perfectly intact. Processing begins in the tannery, where the salted hides arrive from the farm. Before it is cleaned, each hide is cut into the various sections - flank, shoulder and back - that will be used for different products. Next come the cleaning procedures, which were once called "riviera operations" because they used to be performed along the banks of rivers. Today, the fur and the fatty components are removed by soaking the skins in large drums or tubs containing water, lime and sodium sulfide.

In the cleaning bath, the volume of the hides increases. The extra thickness allows them to be "split" by a cutting operation that results in two layers with different characteristics: a valuable, extremely strong upper layer called the "grain"; and the bottom layer, which does not have surface marks and is known as the "split". At this point, the hide is tanned with a treatment that greatly increases its useful life and provides it with specific qualities. The ingredients of the tanning bath (acids, salts, fats and oils) differ depending on whether soft leather or coach hide is to be produced. For a few days, the hides spin in drums full of water and tanning ingredients added in secret proportions. After tanning, processing continues with drying or "placing in the wind".

The hide then returns (for the third time) to the drums, this time for dyeing. Here, it is coloured with a solution of water and pure aniline that creates a clear coloration looking like watercolour. Next, the colour is made more uniform with manual "finishing", and the hide is dried, stretched, and subjected to additional dry drumming to make it softer and bulkier. At this point, each Matteograssi hide is ready to be marked according to its properties. Matteograssi coach hide and soft leather are some of the highest quality materials available on the market, which is made possible by selecting the finest technologies, materials and craftsmen, and by employing costly, demanding processes that meet the consumer's expectations, in the tradition of fine leather craftsmanship.

CRAFTSMANSHIP



At Matteograssi, soft leather and coach hide are still processed almost completely by hand. Thus, on the shelves and work benches at the company, together with the latest modern equipment you can see the traditional tools employed by preceding generations in their work. Using these instruments, the hands of Matteograssi craftsmen repeat the exact same operations that were performed over a hundred years ago.

At Matteograssi, the concept of an “assembly line” is still unknown, and the sophisticated computerized technologies that predominate in today’s industrial production are only used to perform a few processing steps such as cutting and splitting, since machines can carry out these operations more precisely and efficiently than people. Cutting and splitting are performed to shape the coach hide or soft leather into the form and thickness required by each piece. Pieces that require shaping are pre-moulded, while others are sewn, according to their design. Next, the prepared pieces are fit onto the frame, which is the most delicate and most important step in the entire production process. Then, the piece is finished in a number of steps that include finishing the edges, which are cut, smoothed, rounded, coloured and polished.



Finally, the completed single parts are assembled. Upon completion, each product receives a certificate signed by the “master saddler” which certifies compliance with the declared level of quality. In 1994, Matteograssi became one of the first furnishing companies in Italy to obtain ISO 9001 certification.

LATEST NEWS

In 2016 CCM Srl acquired Matteograssi. The company is now part of the CCM group, the world leader in Airport Interior.

In over thirty-five years of activity CCM has made over three hundred airports around the world, working with some of the most important architects and building upon their design of airport interiors to become the reference point of the market.

Recently CCM expanded to include CCM-Technology, with the capacity and ability to integrate and coordinate the modern technology of Special IT Systems within the various aspects of CCM and its projects

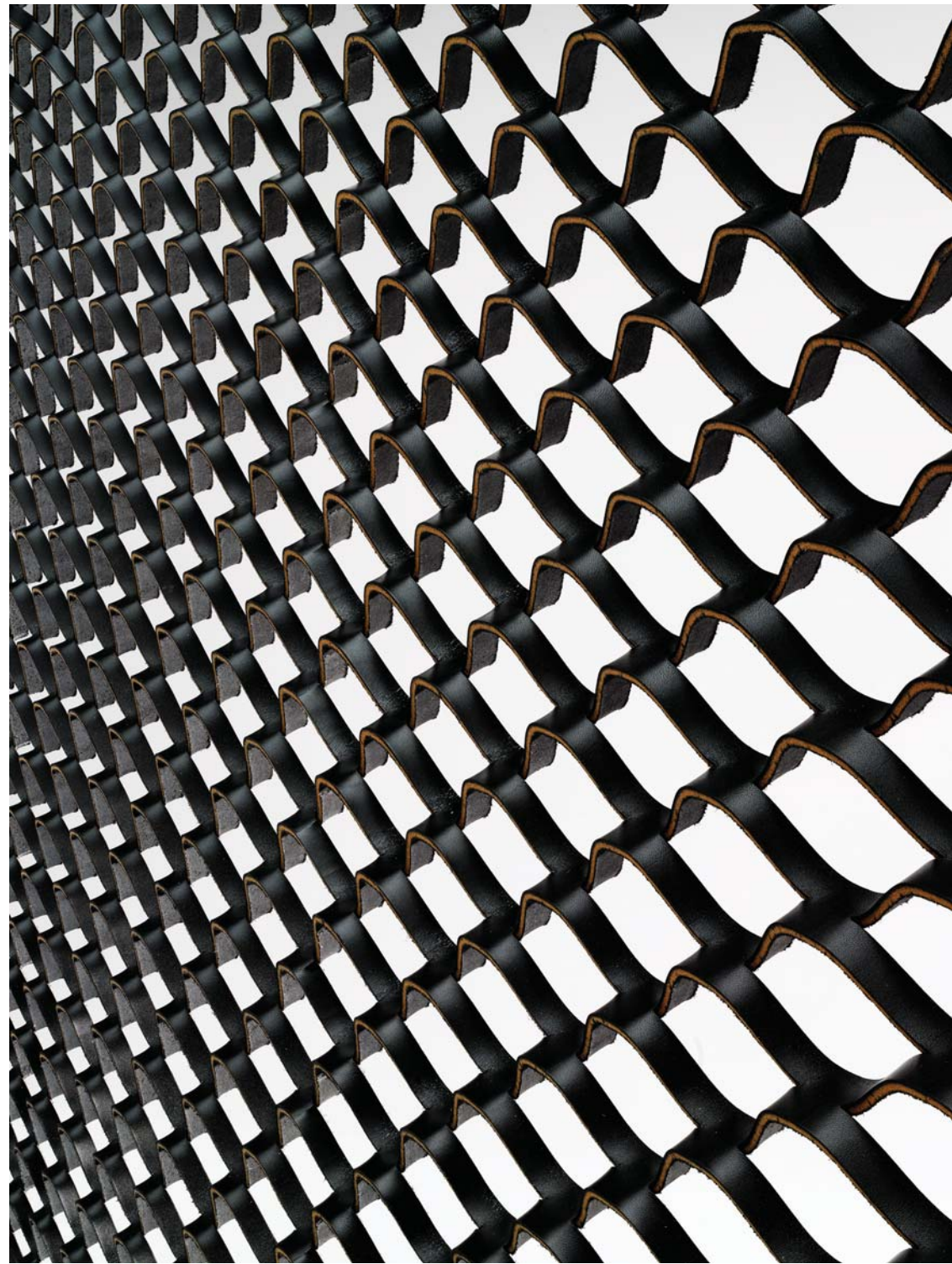
Matteograssi completes the group portfolio as the last piece of the mosaic. By gaining the experience and skills of Matteograssi in the furniture sector, CCM is today more and more general contractor, with a range of proposals from interior - design, standard and custom made furniture, turnkey management of projects across all aspects of public spaces.





COLLECTION

a selection of our products



Designers

Carlo Bartoli

Metron

Vela



Cruise

Stefano Bigi



Medusa

Wimbledon

Piero Lissoni

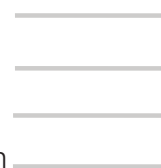
Rodolfo Dordoni

2Leather

Must

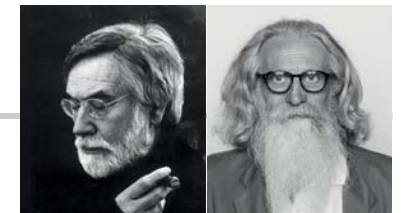
Tent

Zip Couch



L. Massoni
G. Cazzaniga

Esquire



Wave Gordon Guillaumier

1880
matteograssi.

MG

Mizar

Nashira



Patrick Jouin

Leaf



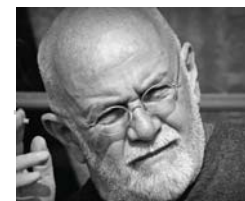
Matteo Nunziati

Axis

Dali



KO Kunihide Oshinomi



Aretè / Nirvana

Loom / Openside

Loomy, T-Net / Zoe



Franco Poli

2Leather

design Rodolfo Dordoni

1880
matteograssi.

Upholstered polyurethane armchairs with high or low back and footrest covered with soft leather and enriched by a zipper surrounding the shell.





Areté *(Original Edition)* design Franco Poli

1880
matteograssi.



Armchair in coach hide cutted net. Chromium plated steel frame. Padding in high density flexible polyurethane foam. Seat in cold moulded rigid polyurethane foam. Chromium plated steel swivel base. Available in different versions.









Low tables with soft leather or coach hide covered top and chrome plated steel base.



Low tables coach hide covered available with bar/bottle compartment.



Upholstered polyurethane armchairs with high or low back and footrest covered with soft leather or with armrest and backrest in coach hide and seat in soft leather.







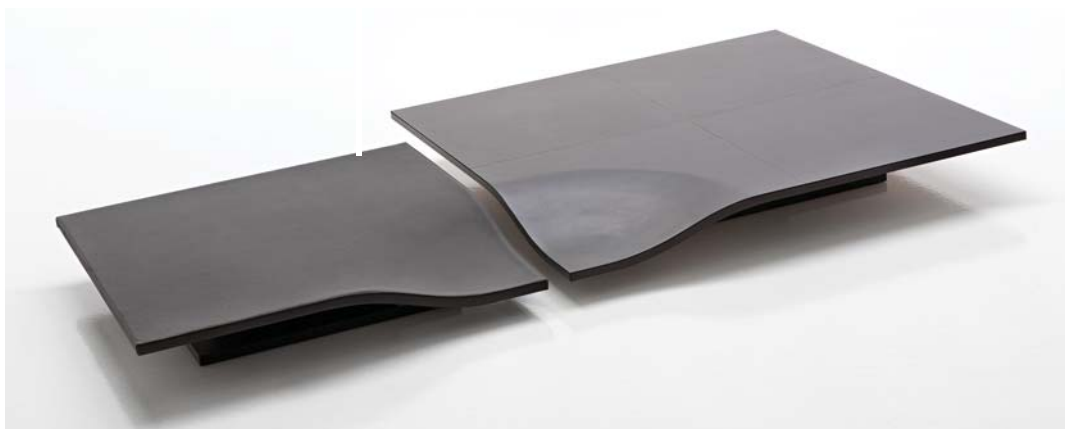
Dali

design Matteo Nunziati

1880
matteograssi.



Low tables with soft leather or coach hide covered top.





Armchair and sofas upholstered and covered with soft leather.





Upholstered armchair and sofas covered with soft leather, with backrest and armrests coach hide covered. Chrome plated steel legs.







Armchair and sofas upholstered and covered with soft leather with shell in aluminium.



Leaf

design Patrick Jouin

1880
matteograssi.



Small armchair and lounge armchair upholstered and covered with soft leather or with external cover in coach-hide and internal cover in soft leather.









Lounge chair in cutted net coach hide with polished stainless steel frame..





Free standing screens in cutted net coach hide.





Upholstered armchair with low or high back covered with soft leather.





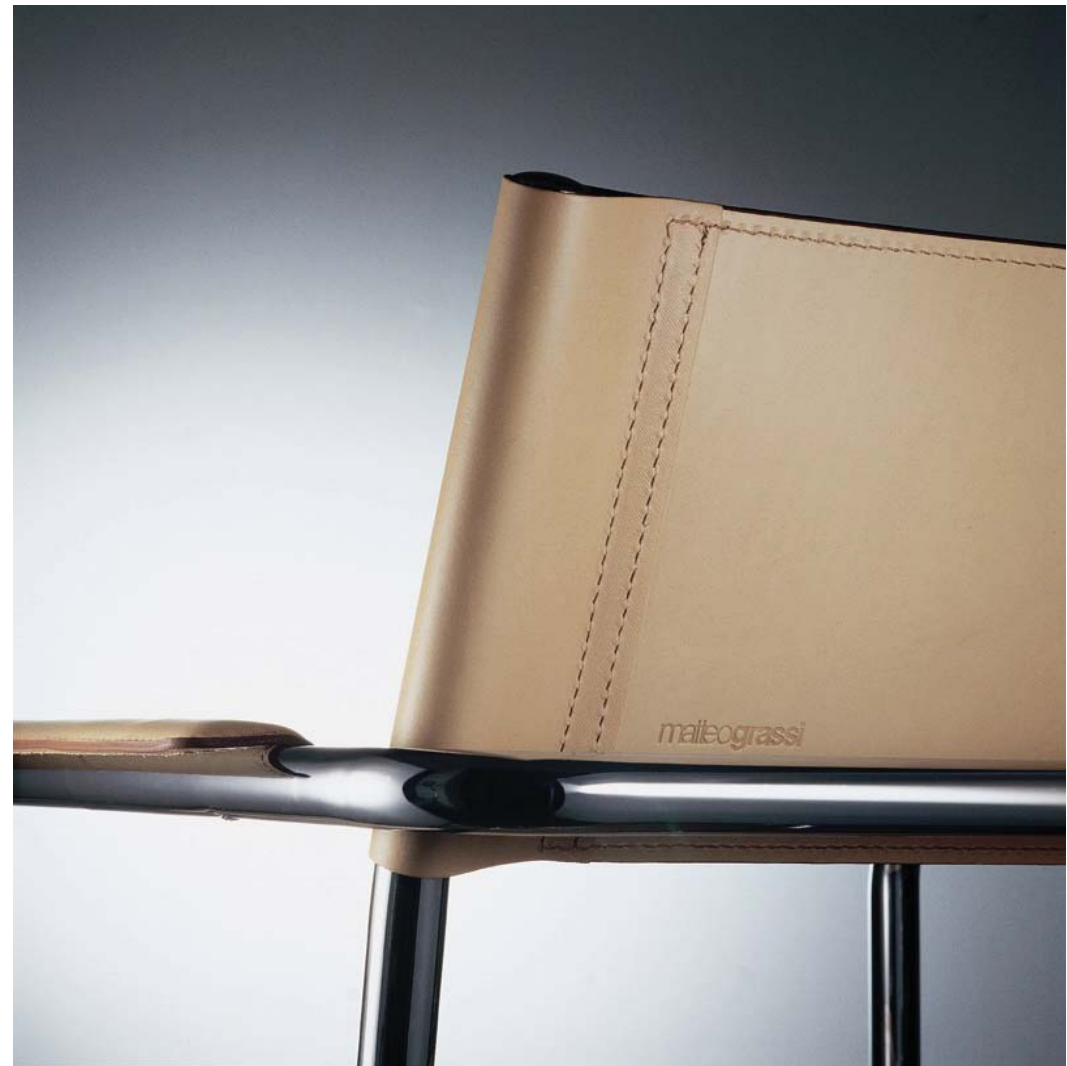
Series of tables and writing desks with glass or coach hide tops and legs covered in coach hide.







Steel small armchairs with seat and back in coach hide..



Swivel office and directional armchairs in steel, shell covered with coach hide and cushions in soft leather.







Must

design Rodolfo Dordoni

1880
matteograssi.



Series of tables / writing desks with chromed base available with or without panels. MDF tops covered with soft leather or coach-hide







High longue chair in coach hide with padded integrated seat cushion covered with soft leather.





Nirvana

design Franco Poli

1880
matteograssi.



Upholstered armchair and sofas covered with soft leather, available a version with the back made of coach hide net.









Low tables covered with coach hide or soft leather.



Openside

design Franco Poli

1880
matteograssi.



Series of modular sofas and benches covered in soft leather.





Tent

design Rodolfo Dordoni

1880
matteograssi.



Tables with coach hide covered central base and glass top or coach hide covered top





Free standing or hanging screen in cut coach hide net.





Coach hide small armchair with metal or wooden legs





Cabinets entirely covered with coach hide..





Wimbledon

design Piero Lissoni

Armchair made of chromed steel tubular frame and coach hide shell.





Zip Couch

design Rodolfo Dordoni

1880
matteograssi.

Sofas upholstered and covered with soft leather and enriched by a zipper.







Chair in coach hide cutted net.



CASE HISTORY

WORKING SPACES HOSPITALITY AND PUBLIC AREAS

The style and organizational efficiency of Matteograssi - combined with the aesthetic qualities of projects incorporating ergonomic solutions and innovative functions - have made the company one of the most recognized names in office design. A subdued, pleasant, unforced originality that is never affected or overwhelming characterizes the Matteograssi collections which furnish offices in prestigious companies around the world. The company believes that work space requires settings which comply with the needs and thoughts of the people who work in them, while maintaining a high level of comfort, but without sacrificing the pleasure of moving, living, and meeting in areas where beauty becomes an added dimension of daily activity.

Matteograssi items have been perfectly placed in public areas considered to be the most difficult to furnish, such as restaurants and similar establishments, conference rooms, and large hotels. Sturdy and of the highest quality, Matteograssi coach hide and soft leather acquire charm and beauty as they age, so they can be included with ease in sophisticated areas that require impeccable performance, highlyfunctional solutions, and unmatched elegance. Thanks to these and other excellent characteristics, Matteograssi products have furnished the VIP Lounges of major airlines.

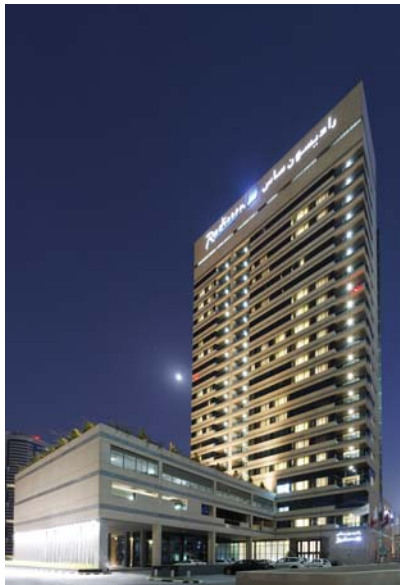
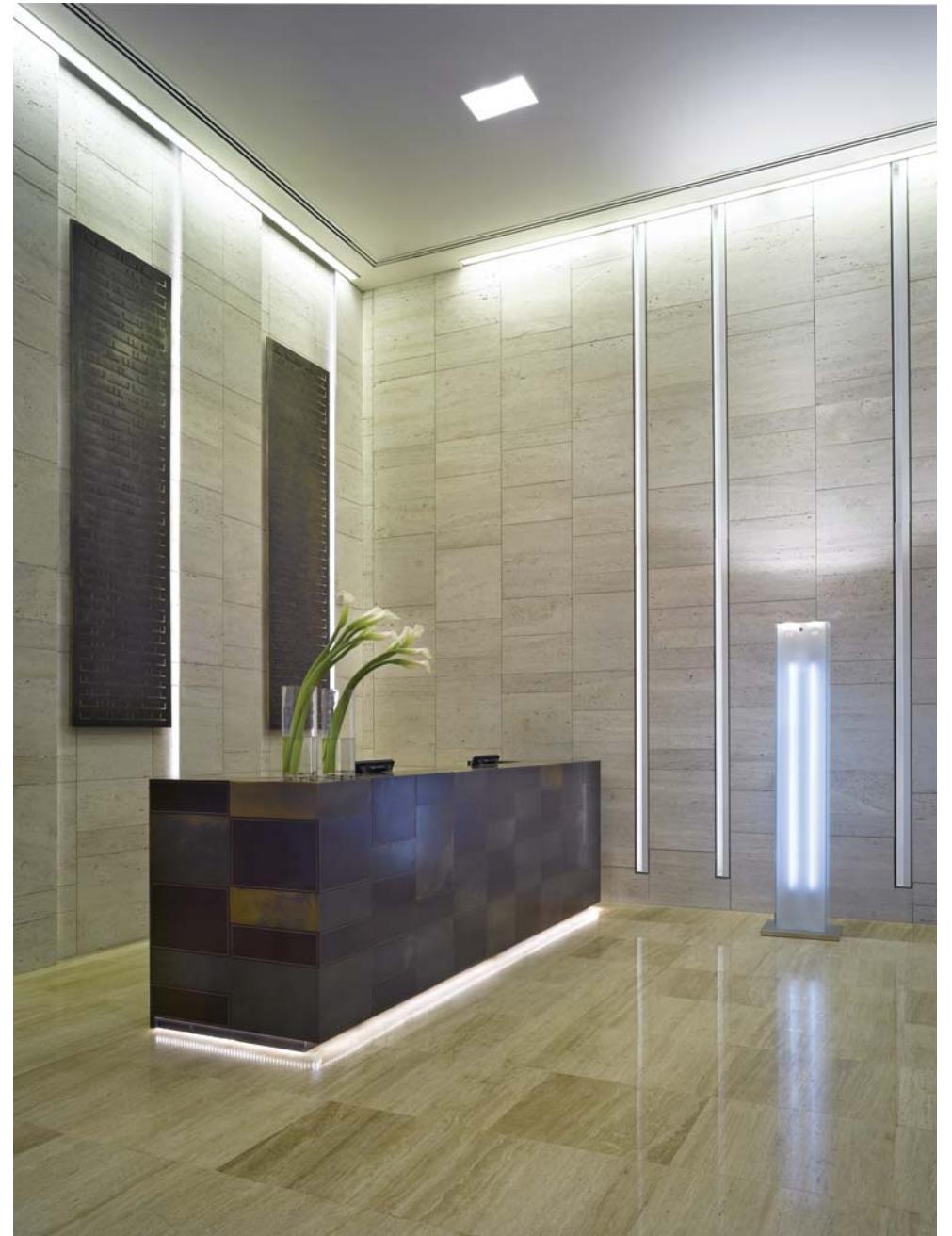
Maison de la Paix - The Graduate Institute - Geneve



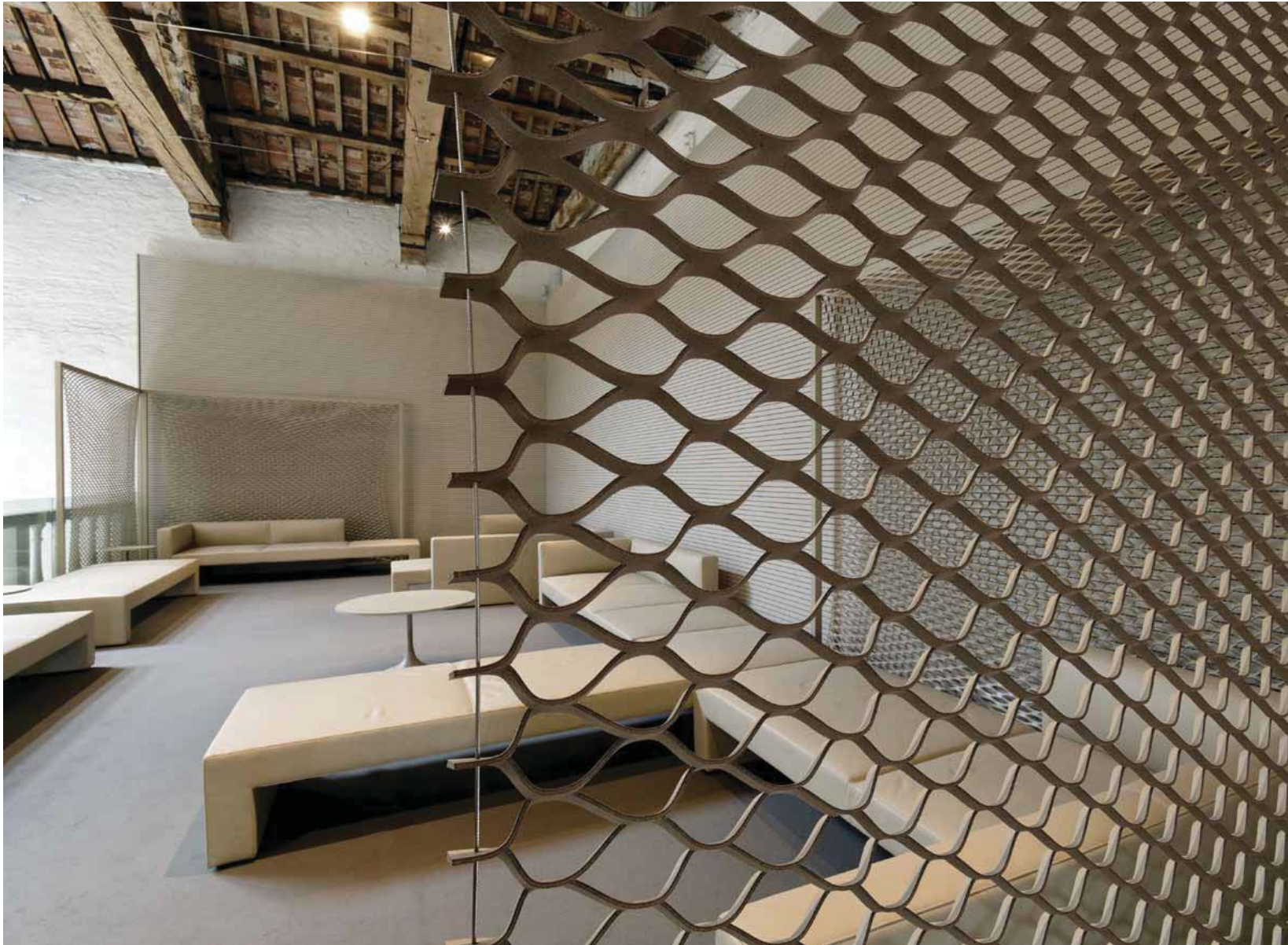


Vq Ventiquattro Radisson - Dubai





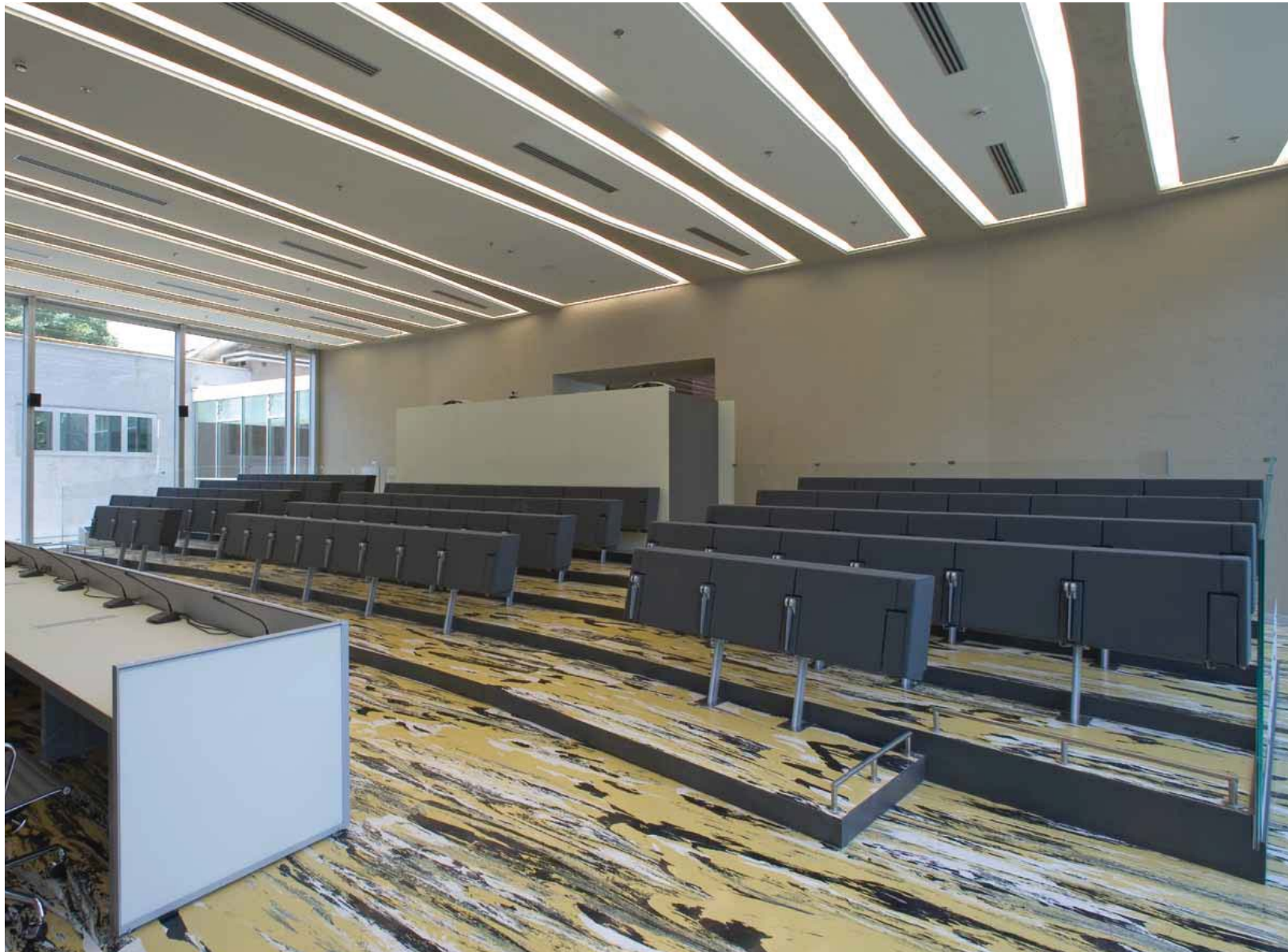
La Biennale - Venice



MAXXI Museum - Rome



Regione Lombardia - Milan

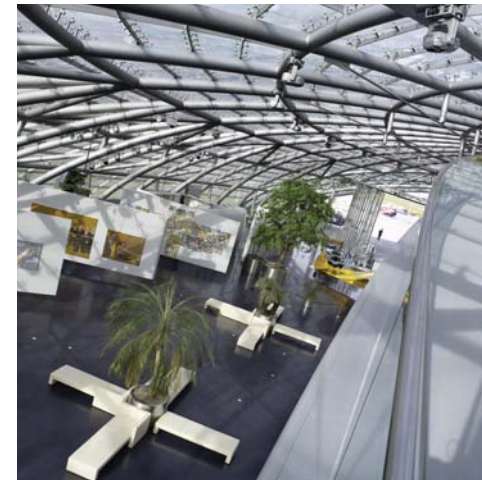


Scottish Parliament - Edinburgh





Red Bull Hangar 7 - Salzburg



Headquarter Tuo Distribuzione - Rome



Sonee Offices - Maldives



Business VIP Terminal - Astana



UN Building, Hall Nr. 17- Geneve





WORKING SPACES HOSPITALITY AND PUBLIC AREAS

LIST OF MAIN REFERENCES

| NATION | CITY | TYPOLGY | REFERENCE |
|----------------|--------------------|--------------|--|
| ALGERIA | ALGERI | HOTEL | Sofitel Hotel Hall |
| ANGOLA | LUANDA | BANK | Banco Quantum Sa |
| ARGENTINA | BUENOS AIRES | INSTITUTIONS | Italian Consulate |
| AUSTRIA | GRAZ | BANK | Raiffeisenzentralkasse |
| AUSTRIA | HINTERGLEMM | BANK | Raiffeisenbank Saalbach |
| AUSTRIA | KLAGENFURT | BANK | Offices of Hypobank of Sarajewo - Branch of Klagenfurt |
| AUSTRIA | LINZ | COMPANY | Brau AG |
| AUSTRIA | SALZBURG | AIRPORT | Red Bull airport plane hangar |
| AUSTRIA | WIEN | | Wien Chefetage |
| AUSTRIA | WIEN | INSTITUTIONS | Parliament - Vip Offices |
| AUSTRIA | WIEN | HOTEL | Hotel Sofitel Wien |
| AUSTRIA | WIEN | INSTITUTIONS | Australian Ambassador Offices |
| BELGIUM | BRUXELLES | COMPANY | Goodyear Offices -Tyre Company |
| BELGIUM | BRUXELLES | HOTEL | Jolly Hotel |
| BULGARIA | SOFIA | BANK | Bulgarian National Bank for Foreign Affairs |
| CANADA | CALGARY | RESTAURANT | Olive Restaurant |
| CANADA | TORONTO | RESTAURANT | CN Tower Restaurant |
| CANADA | TORONTO | COMPANY | M c Carthy and Associates |
| CHILE | SANTIAGO DEL CHILE | HOTEL | SFI Resorts |
| CHINA | HONG KONG | COMPANY | Hong Kong Telecom |
| CHINA | HONG KONG | COMPANY | Hang Lung (Real Estate Agencies) Ltd. |
| CHINA | MACAU | HOTEL | Hotel Lisboa |
| CHINA | SHANGHAI | SHOPS | Louis Vuitton |
| CZECH REPUBLIC | PRAGUE | HOTEL | Hotel Four Seasons |
| EGYPT | EL CAIRO | CORPORATION | French Embassy in El Cairo |
| ETHIOPIA | ADDIABEBA | INSTITUTIONS | Australian Ambassador Offices |
| ETHIOPIA | ADDIS ABEBEBA | INSTITUTIONS | Australian Ambassador Residence |
| FRANCE | ALENCON | CORPORATION | Conseil General de L'Orne |
| FRANCE | AULNAY SOUS BOIS | AUDITORIUM | L'Oreal Conference centre |
| FRANCE | BAYONNE | BANK | Bami - Banque Michel Inchauspé |
| FRANCE | CANNES | SHOPS | Christian Dior Shop |
| FRANCE | DIJON | HOTEL | Hotel de La Cloche |
| FRANCE | DOULLENS | HOSPITAL | Board Room of Hospital |
| FRANCE | GEORGES ON TARN | HOTEL | Grand Hotel de La Muse |
| FRANCE | GRENOBLE | INSTITUTIONS | New Hall of Justice |
| FRANCE | IVRY | INSTITUTIONS | Mairie d'Ivry |
| FRANCE | LE MANS | COMPANY | Waiting room of LeMans Town Hall |
| FRANCE | LOIGNY | OFFICES | European Development Seat |
| FRANCE | METZ | BANK | Banque du Credit Mutuel |
| FRANCE | LYON | CORPORATION | Conseil de l'Ordre des Medicines |
| FRANCE | LYON | OFFICES | Head offices of Insurance April |
| FRANCE | METZ | HOTEL | Hotel de Rerrion de Lorraine |

| NATION | CITY | TYOLOGY | REFERENCE |
|---------|---------------------|--------------|--|
| FRANCE | PARIS | CORPORATION | Associations des Maires des Grandes Villes de France |
| FRANCE | PARIS | CORPORATION | House of Commons |
| FRANCE | PARIS | CORPORATION | Ministry of Finance |
| FRANCE | PARIS | OFFICES | Head Office of Telecommunications |
| FRANCE | PARIS | COMPANY | Longchamp Race Course |
| FRANCE | PARIS | SHOPS | La Squadra Jewellers |
| FRANCE | PARIS | OFFICES | IBM Offices |
| FRANCE | PARIS | CORPORATION | Federation Française de Football |
| FRANCE | PARIS | OFFICES | Advertising Agency Ro |
| FRANCE | PARIS | BANK | BNP Banque Nationale Populaire |
| FRANCE | PARIS | OFFICES | Hardagh Group France, fauteuils en cuir |
| FRANCE | PARIS | COMPANY | Siège de Mars Films, France |
| FRANCE | PARIS | OFFICES | Latham & Watkins LLP - attorneys - bureaux |
| FRANCE | PARIS | OFFICES | France Telecom Orange |
| FRANCE | PARIS | SHOPS | Louis Vuitton Shop and Office |
| FRANCE | PARIS | SHOPS | Hermes Shop |
| FRANCE | PARIS | SHOPS | Christian Dior Shop |
| FRANCE | PARIS | COMPANY | Hachette Livres |
| FRANCE | ST.VALERY SUR SEINE | HOSPITAL | Board Room of Hospital |
| FRANCE | STRASBOURG | CORPORATION | Ministry of Culture |
| FRANCE | STRASBOURG | INSTITUTIONS | European Parliament |
| FRANCE | TOULON | CORPORATION | Mayor Office at the Town Hall |
| GERMANY | BERLIN | BANK | Grundkreditbank |
| GERMANY | BERLIN | HOTEL | Hotel Castor |
| GERMANY | BERLIN | INSTITUTIONS | Kunstgewerbemuseum |
| GERMANY | BERLIN | INSTITUTIONS | Museen für die Europäische Kunst |
| GERMANY | BERLIN | INSTITUTIONS | Embassy of France |
| GERMANY | BERLIN | HOTEL | Sir F.K. Savigny Hotel (4 Stars) |
| GERMANY | BONN | OFFICES | Telekom |
| GERMANY | BONN | COMPANY | T-Mobile |
| GERMANY | DUESSELDORF | OFFICES | No wea Messegesellschaft- Fair Offices |
| GERMANY | DUESSELDORF | OFFICES | Victoria Versicherungen Insurance Company |
| GERMANY | DUESSELDORF | BANK | NRW Bank |
| GERMANY | DUISBURG | COMPANY | Krupp Industrietechnik |
| GERMANY | GERA | HOTEL | Ramada Hotel |
| GERMANY | GUMMERSBACH | HOSPITAL | Gummersbach Hospital |
| GERMANY | GUTERSLOH | COMPANY | Bertlesmann Software |
| GERMANY | HAMBURG | HOTEL | Hotel Gastwerk in Hamburg |
| GERMANY | KARLSRUHE | OFFICES | AML Versicherung Insurance Company |
| GERMANY | KOELN | HOTEL | Hotel Maritim |
| GERMANY | KOELN | BANK | Kreissparkasse |
| GERMANY | MUNICH | HOSPITAL | Universität Klinikum |
| GERMANY | NUERNBERG | AIROPORT | Airport Nürnberg Offices |
| GERMANY | RADEFELD | OFFICES | Deutsche Post AG |
| GERMANY | SEEHEIM | AIRPORTS | Deutsche Lufthansa Airlines |
| GERMANY | STRUTTGART | OFFICES | Daimler Benz (Mercedes) Offices |

| NATION | CITY | TYOLOGY | REFERENCE |
|-----------|---------------------------------|--------------|--|
| GREECE | ATHENS | AIRPORTS | Aegean Airlines |
| GREECE | ATHENS | AIRPORTS | Athens International Airport |
| HOLLAND | DEN HAAG | OFFICES | Aegon Insurance Company |
| HOLLAND | DEN HAAG | OFFICES | Headquarter of Post and Telecommunications |
| HOLLAND | NAARDEN | COMPANY | Board Room Naarden Chemie - Chemical Industrie |
| INDIA | NEW DEHLI | HOTEL | The Oberoi Gurgaon Hotel |
| INDONESIA | JAKARTA | OFFICES | Humpuss Terminal Petikemas |
| INDONESIA | JAKARTA | COMPANY | PT. Mulialand Headquarters |
| INDONESIA | JAKARTA | OFFICES | Perdana Finance |
| INDONESIA | JAKARTA | OFFICES | Nusa Kirana Finance |
| INDONESIA | JAKARTA | OFFICES | Emerald One |
| INDONESIA | JAKARTA | OFFICES | Mulia Group |
| IRELAND | DUBLIN | COMPANY | AIB Capital Markets |
| IRELAND | DUBLIN | BANK | Bank of Ireland Head Office |
| IRELAND | DUBLIN | CORPORATION | Educational Building Society |
| ISRAEL | JERUSALEM | HOTEL | Shalom Jerusalem Hotel |
| ISRAEL | JERUSALEM | HOTEL | Laromme Jerusalem Hotel |
| ISRAEL | TEL AVIV | HOTEL | Sun Hotel |
| ISRAEL | TEL AVIV | INSTITUTIONS | Australian Ambassador Offices |
| ITALY | ALESSANDRIA | BANK | Cassa Rurale Artigiana |
| ITALY | SEVERAL BRANCHES | BANK | Banca d'Italia |
| ITALY | SEVERAL BRANCHES | BANK | C.A.R.I.P.L.O. Bank |
| ITALY | ANCONA | OFFICES | Ferrovie dello Stato FFSS - Ancona Railway Station |
| ITALY | RIVERGATO (PC) | OFFICES | Vranken Pommery |
| ITALY | BARI | CORPORATION | C.I.A.S.U. Centro italiano alti studi universitari |
| ITALY | BERGAMO | BANK | Banca Popolare di Bergamo Bank |
| ITALY | BIELLA | HOSPITAL | Clinica La Vialarda - Private Hospital |
| ITALY | BINASCO | COMPANY | Officine Cimbali Spa - Coffee Machinery Company |
| ITALY | BRESCIA | COMPANY | Industrie Lucchini -Lusigest SpA |
| ITALY | BRESCIA | COMPANY | Time Records |
| ITALY | CASERTA | HOTEL | Jolly Hotel |
| ITALY | CASTIGLIONE DELLE STIVIERE (MN) | COMPANY | Wella Italy |
| ITALY | CERESARA | COMPANY | CSp International Spa - Socks Manufacturing Company |
| ITALY | CHIOGGIA | BANK | Credito Italiano Bank |
| ITALY | CITTA' DI CASTELLO | BANK | Cassa di Risparmio Palazzo Vitelli Bank |
| ITALY | DOMODOSSOLA | BANK | Credito Italiano Bank |
| ITALY | ERBA (CO) | BANK | Banca di Credito Cooperativo dell'Alta Brianza |
| ITALY | FIRENZE | HOTEL | Hotel Brunelleschi |
| ITALY | FIRENZE | OFFICES | Galleria degli Uffizi - Vasari Gallery |
| ITALY | GALLARATE | BANK | Banca Popolare di Bergamo Bank |
| ITALY | GENOVA | BANK | I.B.I/ Milano Bank |
| ITALY | GENOVA | CORPORATION | Genoa Architect Association - Ordine Architetti Genova |
| ITALY | LECCE | OFFICES | Ufficio della Presidenza della Provincia di Lecce |
| ITALY | LISSONE MI | BANK | Cassa Rurale ed Artigiana di Carate Brianza Bank |
| ITALY | MANTOVA | BANK | Banca Nazionale del Lavoro Bank |
| ITALY | MARTINA FRANCA (TA) | HOTEL | Hotel Villa Ducale |

| NATION | CITY | TYOLOGY | REFERENCE |
|--------|---------------------|--------------|---|
| ITALY | MILANO | BANK | Che Banca! |
| ITALY | MILANO | BANK | Offices of Milan Stock Exchange |
| ITALY | MILANO | COMPANY | A.C.I.- Italian Cars Association |
| ITALY | MILANO | COMPANY | Alcatel |
| ITALY | MILANO | BANK | Banca Intesa San Paolo - Bank Intesa San Paolo |
| ITALY | MILANO | BANK | Banca Provinciale Lombarda Bank |
| ITALY | MILANO | COMPANY | BASF Italy |
| ITALY | MILANO | CORPORATION | Swiss Chamber of Commerce |
| ITALY | MILANO | HOSPITAL | Clinica La Madonnina - Private Hospital |
| ITALY | MILANO | HOTEL | Jolly Hotel |
| ITALY | MILANO | COMPANY | Kraft Jacobs Suchard |
| ITALY | MILANO | COMPANY | Pierrel Spa Pharmaceutical Company |
| ITALY | MILANO | COMPANY | Wallcovering srl Pubblicità - Advertising Company |
| ITALY | MILANO | BANK | Credito Italiano Bank |
| ITALY | MODENA | BANK | Banco San Geminiano e San Prospero Bank |
| ITALY | NEMBRO | BANK | Banca Popolare di Bergamo Bank |
| ITALY | PARMA FONTEVIVO | AIRPORT | Aristea SpA, Parma Interport |
| ITALY | PESARO | BANK | Banca Popolare Pesarese Bank |
| ITALY | POTENZA | CORPORATION | FIS. VI. Spa Conf. Cooperative |
| ITALY | POTENZA | CORPORATION | Soc. Coop. Unioncoop |
| ITALY | REGGIO EMILIA | BANK | Carimonte |
| ITALY | RIVA DEL GARDA (TN) | HOTEL | Hotel Sole |
| ITALY | ROMA | COMPANY | Alcatel |
| ITALY | ROMA | COMPANY | A.N.C.E. Builders National Corporation |
| ITALY | ROMA | BANK | CNPR Association - Cassa dei Ragionieri |
| ITALY | ROMA | BANK | Credito Italiano Bank |
| ITALY | ROMA | INSTITUTIONS | MAXXI (Museo Nazionale delle Arti del XXI Secolo) |
| ITALY | ROMA | INSTITUTIONS | Australian Embassy offices |
| ITALY | ROMA | CORPORATION | Ministry of Economy and Finance |
| ITALY | ROMA | SCHOOL | Pontifical Salesian University |
| ITALY | ROMA | COMPANY | Tuo Distribuzione |
| ITALY | ROMA | BANK | I.B.I/ Milano Bank |
| ITALY | ROMA | COMPANY | Telecom |
| ITALY | SEREGNO (MI) | BANK | Banco di Desio Bank |
| ITALY | SEREGNO (MI) | BANK | Cassa Rurale ed Artigiana di Carate Brianza Bank |
| ITALY | SESSA AURUNCA | BANK | Banca Popolare Massicana Bank |
| ITALY | SEVERAL BRANCHES | BANK | Banca Intesa |
| ITALY | SIENA | SCHOOL | Università di Siena - Siena University |
| ITALY | TERNO D'ISOLA | COMPANY | Colombo Design |
| ITALY | TORINO | BANK | I.B.I/ Milano Bank |
| ITALY | TRENTO | COMPANY | Ferrari S.p.A. Vineries |
| ITALY | TRIESTE | BANK | Cassa di Risparmio di Trieste Bank |
| ITALY | TRIESTE | BANK | Credito Italiano Bank |
| ITALY | TRIESTE | HOTEL | Hotel Alessandro Vittoria |
| ITALY | TORINO | COMPANY | Telecom |
| ITALY | VARESE | BANK | Credito Italiano Bank |

| NATION | CITY | TYOLOGY | REFERENCE |
|------------|--------------------------|--------------|--|
| ITALY | VENEZIA | CORPORATION | Museo Correr |
| ITALY | VERONA | BANK | Credito Romagnolo Bank |
| ITALY | VERONA | BANK | Banca Popolare di Verona (Fondazione) |
| ITALY | VERONA | COMPANY | Telecom |
| ITALY | VOLTERRA | BANK | Cassa di Risparmio di Volterra |
| ITALY | SEVERAL BRANCHES | COMPANY | Alfa Romeo European dealer (Fiat Group) |
| ITALY | MILANO | SHOPS | Pomellato showrooms - Jewellery chain |
| ITALY | PESARO | OFFICES | Confindustria |
| JAPAN | OSAKA | HOTEL | Kawakyu Hotel |
| JAPAN | OSAKA | HOTELS | Takamuroike Golf Club |
| JAPAN | OYAMA | SCHOOL | Tokyo Marine Oyama Training Center |
| JAPAN | TOKIO | INSTITUTIONS | Prefectural Welfare-Tochigi Koseinenkin |
| JAPAN | TOKIO | RESTAURANT | Rosenheim Akasaka Restaurant |
| JAPAN | YOKOHAMA | BANK | Bank of Yokohama Headquarters |
| JAPAN | YOKOHAMA | OFFICES | Melondia Mitsubishi Electronic Network |
| JAPAN | YOKOHAMA | COMPANY | NKK Plant Engineering Corp |
| JAPAN | NAGASAKI | SCHOOL | Ecole de Hayama - Shiseido Japan |
| KAZAKISTAN | ASTANA | VIP LOUNGES | Business Terminal vip lounges and cafeteria |
| LUXEMBOURG | LUXEMBOURG | BANK | Rabobank |
| LUXEMBOURG | LUXEMBOURG | BANK | B.I.L. - Banque Internationale du Luxembourg |
| LUXEMBOURG | LUXEMBOURG | HOTEL | Hotel Royale |
| LUXEMBOURG | LUXEMBOURG | OFFICES | Goodyear Offices-Tyre Company |
| NIGERIA | LAGOS | INSTITUTIONS | Australian Ambassador Offices |
| PORTUGAL | FUNCHAL | AUDITORIUM | Auditorium |
| PORTUGAL | LISBOA | SHOPS | Pomellato showrooms - Jewellery chain |
| QATAR | DOHA | COMPANY | Toyota Headquarter - Lexus Sales Office |
| RUSSIA | MOSCOW | OFFICES | 3M |
| RUSSIA | MOSCOW | AUDITORIUM | Auditorium of 3M Chemicals |
| SINGAPORE | SINGAPORE | HOTEL | Marina Mandarin Hotel |
| SPAIN | BARCELONA | BANK | Bank La Caixa / Barcelona |
| SPAIN | BARCELONA | HOTEL | Hotel Mercer Barcelona |
| SPAIN | BARCELONA | AIRPORTS | Aeroporto Barcellona - Terminal Sud |
| SPAIN | BILBAO | OFFICES | Main office Euskaltel Telefonica/Bilbao |
| SPAIN | BILBAO | AUDITORIUM | Sala Kube Amorebieta |
| SPAIN | CANARY ISLANDS | INSTITUTIONS | Governement Headquarters/Canary Islands |
| SPAIN | GIRONA | BANK | Bank Caixa de Girona /Girona |
| SPAIN | MADRID | AUDITORIUM | Headquarters Telefonica Espana/Madrid |
| SPAIN | MADRID | COMPANY | Telecom |
| SPAIN | MADRID | COMPANY | Headquarters of the company MAPFRE in Madrid |
| SPAIN | MADRID | HOTEL | Hotel Silken Puerta de America, Jean Nouvel |
| SPAIN | MALAGA | OFFICES | Promotoria Inmobiliaria Laietiana - Malaga |
| SPAIN | PALMA DE MALLORCA | AUDITORIUM | COAIB Colegio de Arquitectos de Islas Baleares |
| SPAIN | SAN SEBASTIAN (Donostia) | AUDITORIUM | Camara de Comercio, Industria y Navegación |
| SPAIN | VALENCIA | RESTAURANT | Restaurant Riff |
| SPAIN | BARCELONA | SHOPS | Pomellato showrooms - Jewellery chain |
| SPAIN | MADRID | SHOPS | Pomellato showrooms - Jewellery chain |

| NATION | CITY | TYOLOGY | REFERENCE |
|----------------|-------------------|-----------------|---|
| SWITZERLAND | CHIASO | BANK | Union Bank of Switzerland -UBS |
| SWITZERLAND | GENEVE | SHOPS | Bucherer Jeweller - Sole sales agency Rolex |
| SWITZERLAND | GENEVE | SCHOOL | Great Hall - Geneve University |
| SWITZERLAND | GENEVE | INSTITUTIONS | Town Hall |
| SWITZERLAND | ASCONA | BANK | Credit Suisse |
| SWITZERLAND | GENEVE | BANK | Union Bank of Switzerland -UBS |
| SWITZERLAND | GENEVE | UNIVERSITY | Maison de la Paix |
| SWITZERLAND | GENEVE | UNIVERSITY | Uni Mail |
| SWITZERLAND | GENEVE | CONFERENCE HALL | United Nations - The Emirates Hall - XVII |
| SWITZERLAND | LAUSANNE | SHOPS | Bucherer Jeweller - Sole sales agency Rolex |
| SWITZERLAND | LOCARNO | SHOPS | Bucherer Jeweller - Sole sales agency Rolex |
| SWITZERLAND | LOCARNO | BANK | Union Bank of Switzerland -UBS |
| SWITZERLAND | LOSANNE | BANK | Union Bank of Switzerland -UBS |
| SWITZERLAND | LUGANO | BANK | Union Bank of Switzerland -UBS |
| SWITZERLAND | MONTREUX | BANK | Union Bank of Switzerland -UBS |
| SWITZERLAND | ZURCH | BANK | Union Bank of Switzerland -UBS |
| SWITZERLAND | ZURCIH | SHOPS | Bucherer Jeweller - Sole sales agency Rolex |
| SWITZERLAND | ZURICH | COMPANY | Guardag - Holding Company |
| SWITZERLAND | ZURICH | INSTITUTIONS | Law Courts |
| SWITZERLAND | ZURICH | RASTAU RANT | Restaurant at Kloten Airport |
| SWITZERLAND | ZURICH | INSTITUTIONS | Supreme Court of Justice - Conference Room |
| SYRIA | DAMASCUS | INSTITUTIONS | Australian Ambassador Residence |
| SYRIA | DAMASCUS | INSTITUTIONS | Australian Ambassador Offices |
| TAIWAN ROC | TAIPEI | SHOPS | Pomellato showrooms - Jewellery chain |
| TURKEY | ISTANBUL | COMPANY | Turkcell (Telecom) |
| TURKEY | ISTANBUL | BANK | Egebank Headquarters |
| TURKEY | ISTANBUL | COMPANY | Toprak Co. |
| U.A.E. | DUBAI | COMPANY | Al-Futtaim Motor Company |
| U.S.A | BOSTON, MA | OFFICES | Lobby of 225 Franklinstreet, Financial District offices |
| U.S.A | CHICAGO, IL | AIRPORTS | United Airlines |
| U.S.A | DALLA, TX | HOTEL | Hyatt Regency Hotel |
| U.S.A | DALLAS, TX | HOTEL | Dallas Cow Boy Sporting Center |
| U.S.A | DALLAS, TX | SCHOOL | Texas University |
| U.S.A | LOS ANGELES, CA | HOTEL | Holiday Inn Crown Plaza Hotel |
| U.S.A | LOS ANGELES, CA | HOTEL | Westin Bonaventure Hotel |
| U.S.A | NEW YORK, NY | SHOPS | Louis Vuitton boutique |
| U.S.A | NEW YORK, NY | OFFICES | New York Times |
| U.S.A | SAN ANTONIO, TX | HOTEL | Jw Marriott Country Hill Resort & Spa |
| U.S.A | SAN FRANCISCO, CA | OFFICES | TWA Offices |
| U.S.A | SAN FRANCISCO, CA | RESTAURANT | Hyatt Hotel restaurant |
| U.S.A | YALE | SCHOOL | Yale University |
| UNITED KINGDOM | ABERDEEN | COMPANY | Conoco |
| UNITED KINGDOM | BURTON ON TRENT | COMPANY | Pirelli |
| UNITED KINGDOM | EDINBOURGH | COMPANY | Shepherd & Wedderburn WS |
| UNITED KINGDOM | EDINBOURGH | INSTITUTIONS | Scottish Parliament |
| UNITED KINGDOM | EGHAM | OFFICES | Devonshire Financial Services |

| NATION | CITY | TYOLOGY | REFERENCE |
|----------------|------------------------|---------|--------------------------------|
| UNITED KINGDOM | GLASGOW | OFFICES | Equitable Life Assurance |
| UNITED KINGDOM | JERSEY, CHANNEL ISLAND | BANK | Royal Bank of Scotland |
| UNITED KINGDOM | LONDON | COMPANY | Enterprise Oil |
| UNITED KINGDOM | LONDON | COMPANY | Hamerara Hess |
| UNITED KINGDOM | LONDON | COMPANY | Glaxo, Stockley Park |
| UNITED KINGDOM | LONDON | BANK | Barclays Bank |
| UNITED KINGDOM | LONDON | COMPANY | The Law Society |
| UNITED KINGDOM | LONDON | BANK | Dresdner Bank |
| UNITED KINGDOM | LONDON | OFFICES | PWC offices |
| UNITED KINGDOM | MANCHESTER | OFFICES | Co-operative Insurance Society |
| UNITED KINGDOM | NORTH WALES | OFFICES | Kimberly-Clark |
| UNITED KINGDOM | WATFORD | COMPANY | Santa Cruz Operation |

AIRPORT SEATINGS



Meeting design CRS

Meeting “multiple seating solutions” on beam support with seating units entirely covered in coach hide or integral polyurethane foam, available also in perforated aluminium with seat and back cushions in coach hide. According to the use, the beam can have 2, 3, 4, 5 or more places, corner or back to back solutions. Seats can be realized with high back and eventually equipped with foot-rest.

Convenience table tops can substitute or integrate the seating units.

The system can be assembled and disassembled in a very easy way, even in case of different configurations by adding or taking away some components.

All these combinations permit to have different configurations of compositions in different areas without changing the environment design concept but offering several levels of comfort.





Flyers

design Rodolfo Dordoni

The seat shape is formal and essential. The beam is the main support element where all components are fixed. The beam is the only element which cannot be changed; the other elements are available in multiple options. The base and the armrests are in die-cast aluminium, available in powder coated or chromed finish. The seat supports are in die-cast aluminium and lacquered. The seat shells are divided in two pieces (seat and backrest), all in different finishes: coach hide, soft leather, fabric, wood, metal and polyurethane. The side tables can be supplied in different dimension, shapes and textures are available to meet any layout requirements.





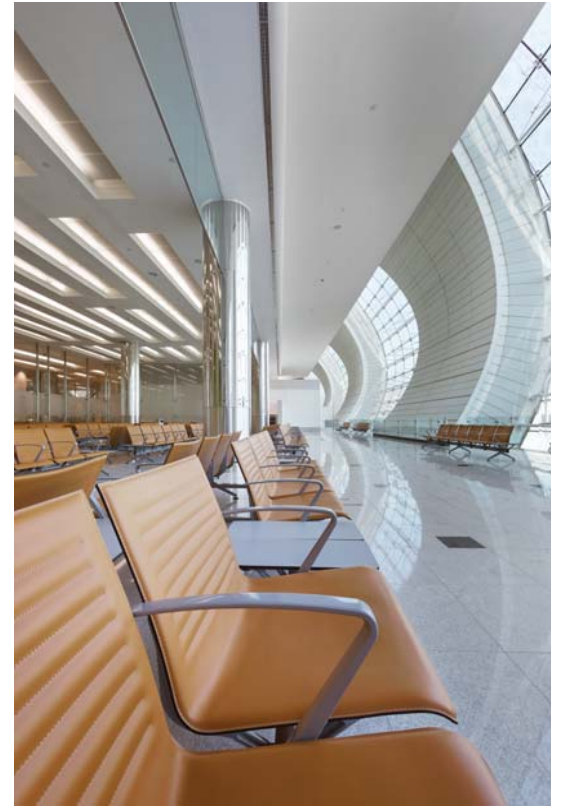
CASE HISTORY

AIRPORTS

The quality of Matteograssi craftsmanship has led the company to experiment with projects for seating in public areas, where soft leather and coach hide were traditionally excluded because they were considered to be delicate and hard to maintain. These projects became the starting point for Matteograssi's Specialization in airport seating. The company created its first concourse in Fiumicino, Frankfurt and Malpensa in the 1990s. Over the years, they were followed by major international orders for Charles De Gaulle Paris, Athens, Dubai, Beijing, Bucharest, Kiev and Djakarta airports. Besides a flexible production capability that can create customized solutions, Matteograssi's success in this sector is due to the competitive ratio of the company's products and its ability to effectively communicate with every customer around the world.

Dubai International Airport





Frankfurt International Airport





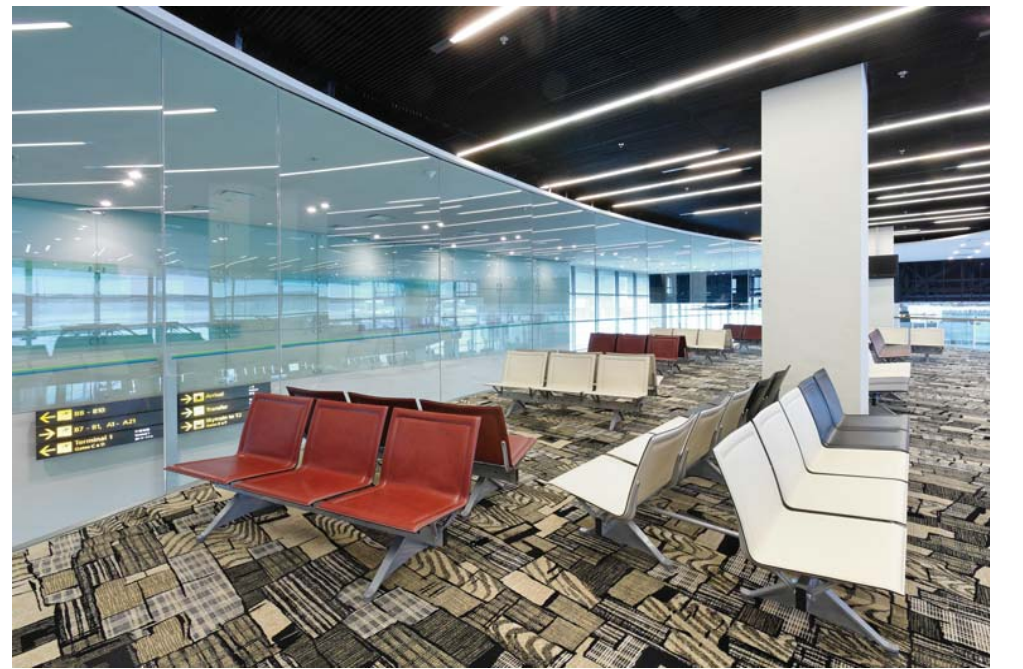
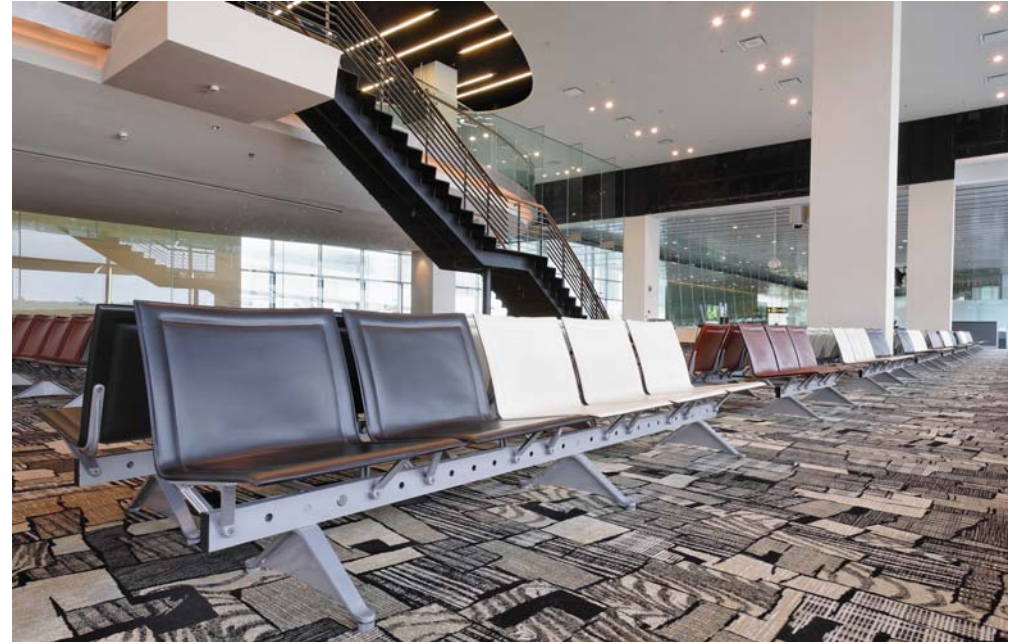
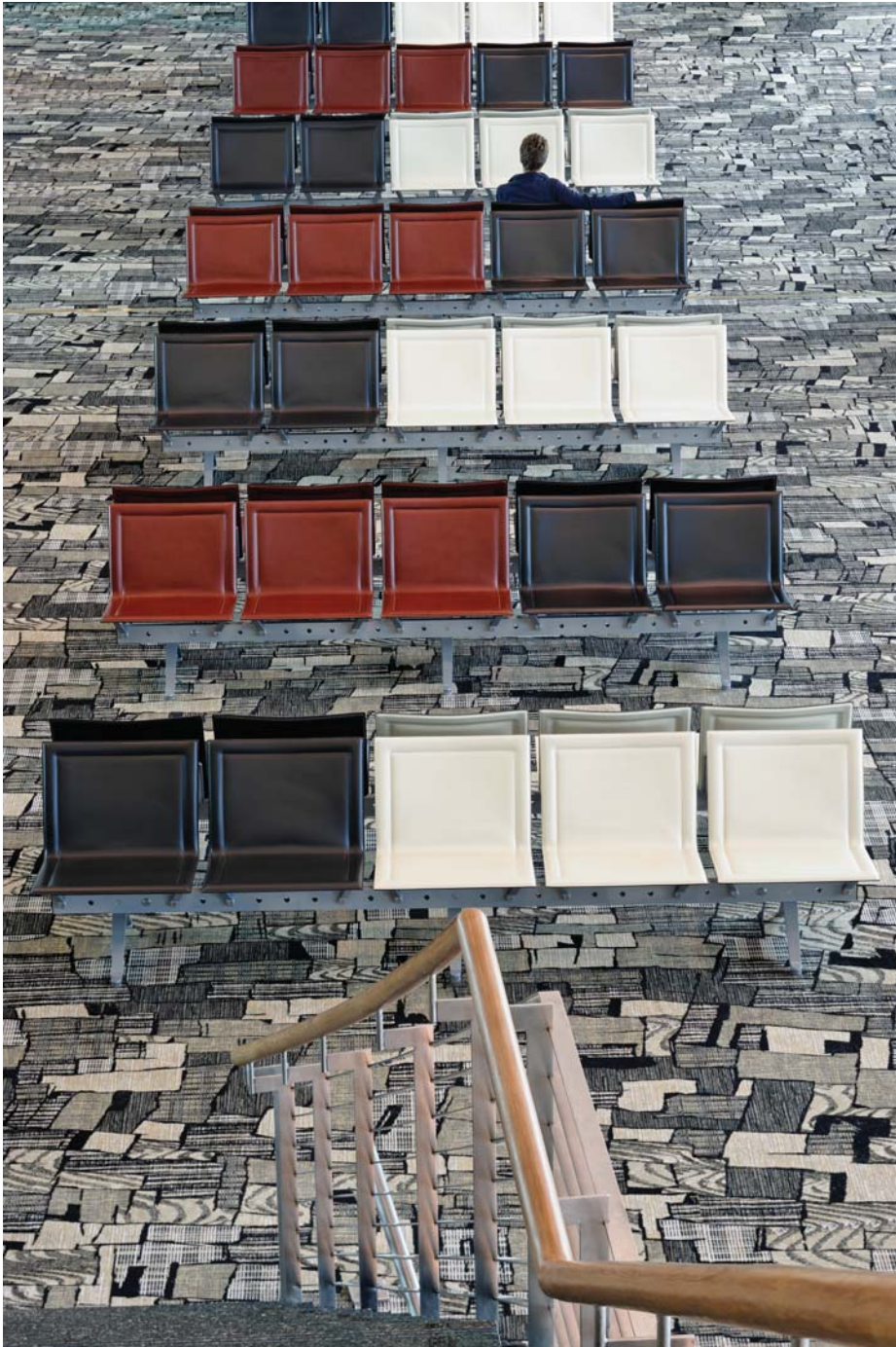
Paris Charles de Gaulles Airport



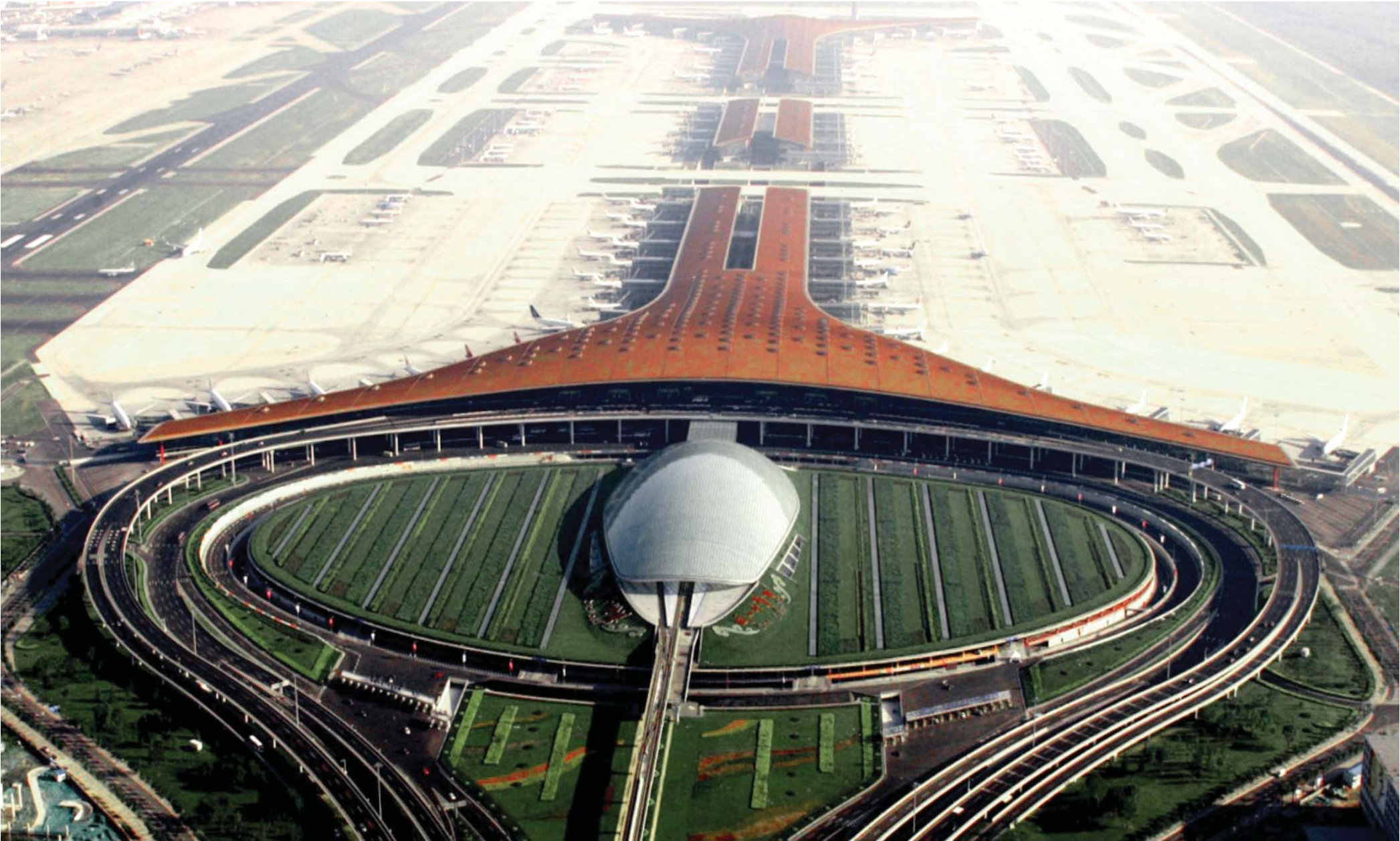


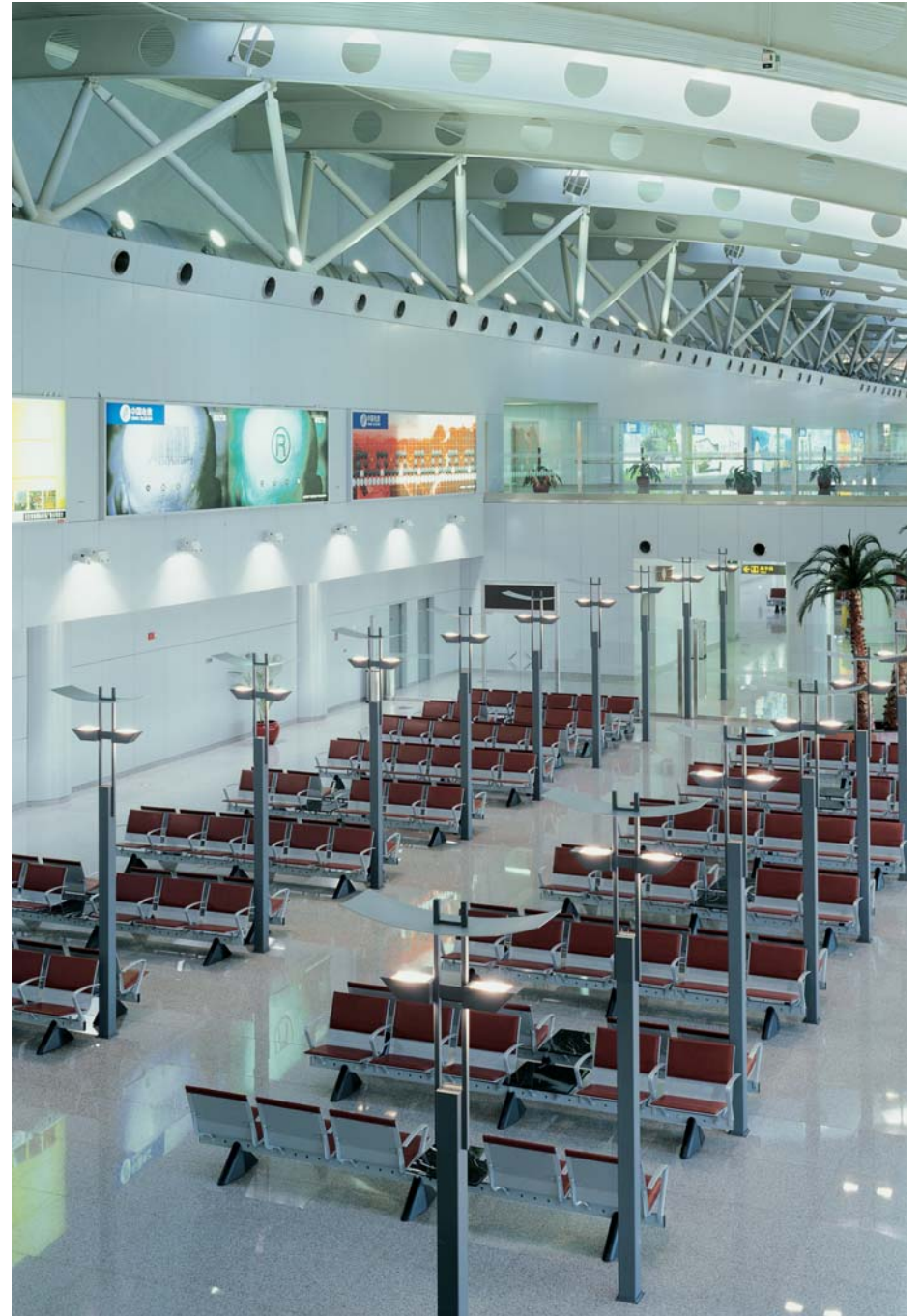
Changi Airport Singapore





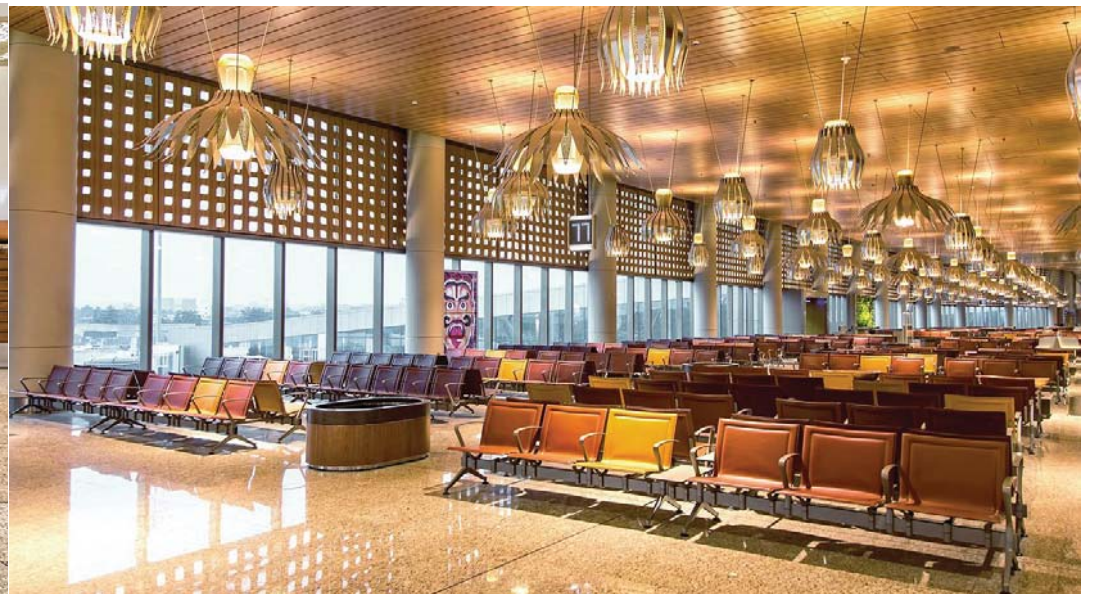
Capital International Airport Beijing





Chhatrapati Shivaji International Airport Mumbai





LIST OF MAIN AIRPORS

| | | | |
|---|--|----------------------------------|---|
| 1990 LEONARDO DA VINCI AIRPORT / Rome (Italy) | the first supply | n° | 310 seats |
| 1992 LEONARDO DA VINCI AIRPORT / Rome (Italy) LEONARDO DA VINCI AIRPORT / Rome (Italy) | the second supply the second supply | n° n° | 2317 seats 288 seats |
| 1993 RIMINI AIRPORT / Rimini (Italy) | | n° | 1089 seats |
| 1994 FRANKFURT AIRPORT / Frankfurt (Germany) - Terminal 2 | the first supply | n° | 5068 seats |
| 1995 FRANKFURT AIRPORT / Frankfurt (Germany) - Terminal 2 FRANKFURT AIRPORT / Frankfurt (Germany) - Terminal 2 KOGALYM AIRPORT / Novosibirsk (Russian Federation) GENOA AIRPORT / Genoa (Italy) | the second supply the third supply | n° n° | 612 seats 152 seats 200 seats 1180 seats |
| 1997 FRANKFURT AIRPORT / Frankfurt (Germany) - Terminal 2 FRANKFURT AIRPORT / Frankfurt (Germany) - Terminal 2 OTOPENI AIRPORT / Bucharest (Romania) | the fourth supply the fifth supply | n° n° | 270 seats 3140 seats 780 seats |
| 1998 AIRPORT IN SAUDI ARABIA / Secret Location (Saudi Arabia) FRANKFURT AIRPORT / Frankfurt (Germany) - Terminal 2 MALPENSA MILAN AIRPORT / Milan (Italy) | the sixth supply | n° n° | 535 seats 128 seats 4620 seats |
| 1999 NEW BEIJING INTERNATIONAL AIRPORT / Beijing (P.R. China) LEONARDO DA VINCI AIRPORT / Rome (Italy) BOLZANO AIRPORT / Bolzano (Italy) | the fourth supply | n° n° n° | 1316 seats 1186 seats 128 seats |
| 2000 DUBAI INTERNATIONAL AIRPORT / Dubai (U.A.E.) BORDEAUX-MÉRIGNAC AIRPORT / Bordeaux (France) LEONARDO DA VINCI AIRPORT / Rome (Italy) | | n° n° n° | 3500 seats 160 seats 360 seats |
| 2001 ELEFThERIOS VENIZELOS AIRPORT / Athens (Greece) | | n° | 6240 seats |
| 2002 LAMEZIA TERME AIRPORT / Lamezia Terme (Italy) | | n° | 320 seats |
| 2003 CHARLES DE GAULLE / Paris (France) BORISPOL AIRPORT / Kiev (Ukraine) | | n° n° | 4300 seats 150 seats |
| 2004 DUBAI INTERNTIONAL AIRPORT / Dubai (U.A.E) JAKARTA AIRPORT ANGKASA PURA II / Jakarta (Indonesia) CHARLES DE GAULLE / Paris (France) - Terminal 1 Satellite 5 ATHENS INTERNATIONAL AIRPORT ELEFThERIOS VENIZELOS / Athens (Greece) SANDRO PERTINI AIRPORT / Torino (Italy) AIRPORT OF ALGHERO FERTILIA / Alghero (Italy) | | n° n° n° n° n° n° | 2179 seats 430 seats 419 seats 805 seats 125 seats 230 seats |

| | | | | | | | |
|--|------------------|-------------|------------|--|------------------|-------------|------------|
| 2005 | | | | | | | |
| JAKARTA AIRPORT ANGKSA PURA II / Jakarta (Indonesia) | n° | 565 seats | | 2013 | | | |
| CHARLES DE GAULLE / Paris (France) | | | | MUMBAI INTERNATIONAL AIRPORT / Mumbai (India) | n° | 10073 seats | |
| - Terminal 1 Main Building | n° | 174 seats | | BAGHDAD INTERNATIONAL AIRPORT / Baghdad (Iraq) | n° | 5700 seats | |
| - Terminal 1 Satellite 4 | n° | 366 seats | | NEW DELHI INTL. AIRPORT / New Delhi (India) | n° | 6000 seats | |
| - Terminal 1 Satellite 6 | n° | 368 seats | | | | | |
| | | | | 2014 | | | |
| 2006 | | | | DUBAI INTERNATIONAL AIRPORT / Dubai (UAE) | Additional seats | n° | 2180 seats |
| CHANGI INTERNATIONAL AIRPORT / (Singapore) | n° | 1471 seats | | VENEZIA INTERNATIONAL AIRPORT / Venice (Italy) | | n° | 120 seats |
| - Terminal 3 - New terminal for A380 | | | | | | | |
| CHARLES DE GAULLE / Paris (France) | | | | | | | |
| - Terminal 1 Satellite 7 | | | | | | | |
| - Terminal 1 Satellite 1 | n° | 374 seats | | | | | |
| - Terminal 1 Satellite 2 | n° | 829 seats | | | | | |
| - Terminal 2A | n° | 744 seats | | | | | |
| - Terminal 2F | n° | 1800 seats | | | | | |
| | | | | | | | |
| 2006 | | | | | | | |
| SANDRO PERTINI AIRPORT / Torino (Italy) | n° | 665 seats | | 2015 | | | |
| TREVISO AIRPORT / Treviso (Italy) | n° | 289 seats | | DUBAI INTERNATIONAL AIRPORT / Dubai (UAE) | Additional seats | n° | 1200 seats |
| | | | | MULTAN INTERNATIONAL AIRPORT / Multan Pakistan | | n° | 800 seats |
| | | | | SIALKOT INTERNATIONAL AIRPORT / Sialkot (Pakistan) | | n° | 200 seats |
| 2007 | | | | MUMBAI INTERNATIONAL AIRPORT / Mumbai (India) | Additional Seats | n° | 1513 seats |
| JAKARTA AIRPORT ANGKASA PURA II / Jakarta (Indonesia) | n° | 565 seats | | FRANKFURT AIRPORT / Frankfurt (Germany) | Additional seats | n° | 300 seats |
| MAIQUETIA INTERNATIONAL AIRPORT / Caracas (Venezuela) | n° | 1120 seats | | | | | |
| FRANKFURT AIRPORT / Frankfurt (Germany) | n° | 1230 seats | | | | | |
| - Terminal E2-E3-E4-E5 | | | | | | | |
| CHARLES DE GAULLE / Paris (France) | n° | 1800 seats | | | | | |
| - Terminal 1 Satellite 3 | | | | | | | |
| | | | | | | | |
| | | | | | | | |
| | | | | | | | |
| | | | | | | | |
| | | | | | | | |
| 2008 | | | | | | | |
| DUBAI INTERNATIONAL AIRPORT / Dubai (U.A.E.) | n° | 18556 seats | | | | | |
| - Terminal 3 & CONCOURSE 2 | | | | | | | |
| PERTH DOMESTIC TERMINAL / Perth (Australia) | n° | 740 seats | | | | | |
| FRANKFURT AIRPORT / Frankfurt (Germany) | n° | 724 seats | | | | | |
| - Terminal 2 Gates D3-D4 | | | | | | | |
| CHARLES DE GAULLE / Paris (France) | n° | 443 seats | | | | | |
| - Terminal 1 Main Building - Phase V | | | | | | | |
| | | | | | | | |
| | | | | | | | |
| 2009 | | | | | | | |
| JAKARTA AIRPORT ANGKASA PURA II / Jakarta (Indonesia) | n° | 1505 seats | | | | | |
| NEW DELHI INTERNATIONAL AIRPORT / New Delhi (India) | n° | 4194 seats | | | | | |
| MUMBAI INTERNATIONAL AIRPORT / Mumbai (India) | n° | 720 seats | | | | | |
| JETSTAR TERMINAL / Melbourne (Australia) | n° | 402 seats | | | | | |
| FRANKFURT AIRPORT / Frankfurt (Germany) | n° | 192 seats | | | | | |
| - Terminal 2 Gate E9 | | | | | | | |
| MALTA INTERNATIONAL AIRPORT / (Malta) | n° | 933 seats | | | | | |
| - Departure Terminal | | | | | | | |
| | | | | | | | |
| | | | | | | | |
| 2010 | | | | | | | |
| DUBAI WORLD CENTRAL JEBEL ALI AIRPORT / Dubai (U.A.E.) | n° | 3574 seats | | | | | |
| NEW DELHI INTERNATIONAL AIRPORT / New Delhi (India) | Additional seats | n° | 1542 seats | | | | |
| - Terminal T3 | | | | | | | |
| | | | | | | | |
| 2011 | | | | | | | |
| BANGALORE INTERNATIONAL AIRPORT / Bangalore (India) | n° | 2500 seats | | | | | |
| | | | | | | | |
| 2012 | | | | | | | |
| BAGHDAD INTERNATIONAL AIRPORT / Baghdad (Iraq) | n° | 7100 seats | | | | | |

PROJECT MANAGED BY C.C.M. Srl AFTER PURCHASE OF MatteoGrassi 1880

Matteograssi srl
Via Monte Grappa 2/4
20060 Truccazzano (MI), Italy
Tel. +39 02 95367267
Sales +39 02 95367264 - Mrs. Francesca Rossi
+39 02 95367266 - Mr. Salvatore Iannone
info@matteograssi.com
www.matteograssi.com

 **C.C.M.** group
www.ccmairports.com

